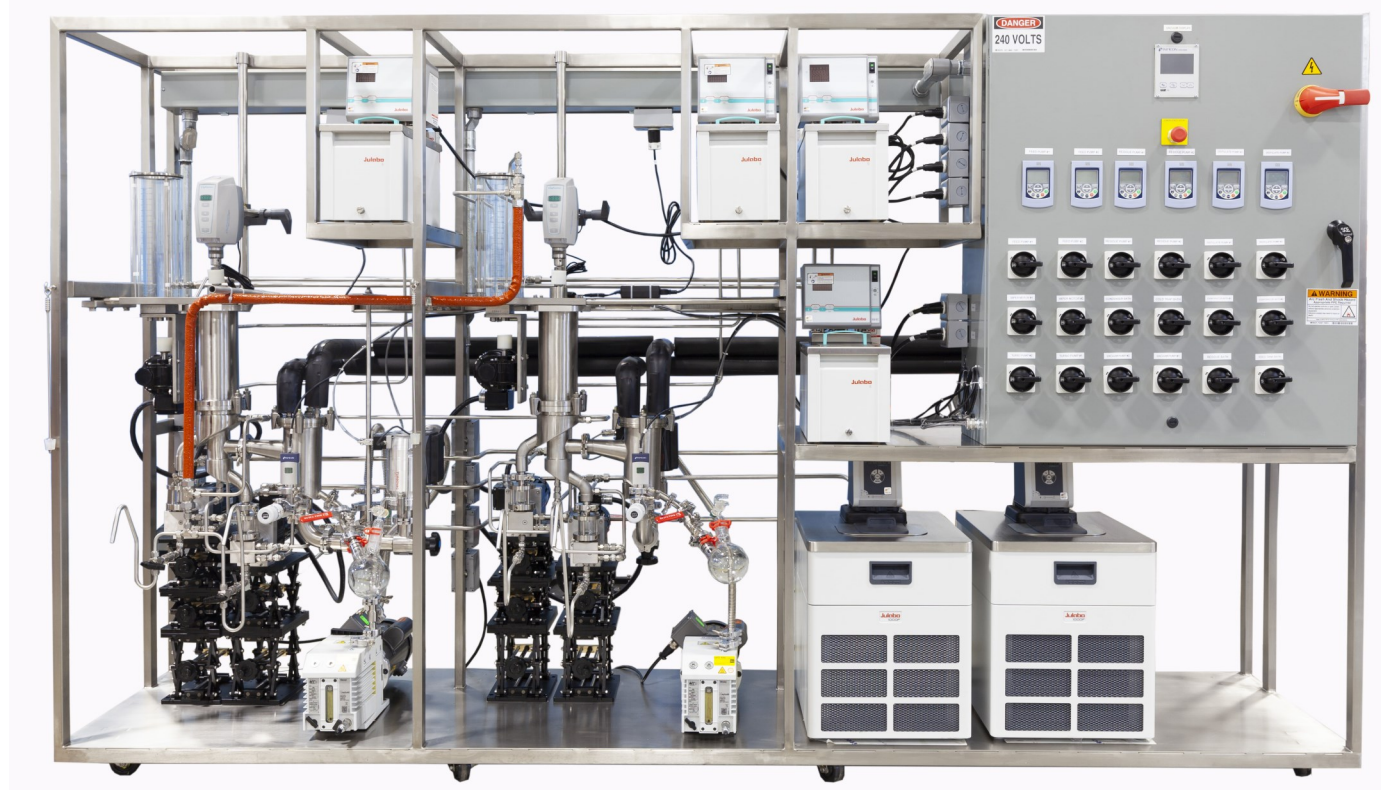




Two Stage KDT-6 Short Path Distillation Unit



General Information

Evaporator Type:	Short Path
Evaporator Construction:	316 Stainless Steel
Evaporator Surface Area:	0.06 m ²
Feed Metering System:	Gear Pumps

Unit Dimensions

129"L x 28"W x 76"H

General Operating Characteristics

Evaporator Temperature Range: Amb to 300 C
Cold Trap: -50 C
Ultimate Vacuum: 0.001 Torr
Flow Rate: ~3 L/hr.

*Specification may vary based on configuration

**Only use appropriate fluids as per circulator manufacturer operating manual

Electrical Specifications

208-240V 3-Phase Up to 160 Amp (Based on Configuration)

Required Utilities

Exhaust for Vacuum Pump Recommended

Circulator Fluids Suggested**

Julabo Thermal C50S for Hot Oil Circulators
Ethylene Glycol for Condenser Circulator
Julabo Thermal C5 for Cold Trap

Evaluated to NSF/ANSI 8 – 2018 –
Commercial Powered Food Preparation
Equipment Standards by





CHEMTECH SERVICES, INC.

Short Path Distillation Services

NRTL Listings

Description	NRTL Body
Hot Oil Circulator	QPS
Chiller Circulator	QPS
Gear Motor ¼ Hp	UL, CSA
Overhead Stirrer 1/18 Hp	cCSA _{US}
TEFC Motor ½ Hp	cCSA _{US} , UR
Vacuum Pump	cUL _{US} , cUL _{US}
Turbo Molecular Pump	UL, CSA
Vacuum Sensor	cETL _{US}
Electrical Control Enclosure	cUL _{US}

Handling Requirements

Frame is on Stainless Steel Casters

Unit Weight: 2400lbs

Requires Forklift for Unloading of Truck

Installation and Training

3 days Onsite Installation and Training Included

Optional Upgrades

Dry Ice / Liquid Nitrogen Insert for Cold Trap

PLC System for data logging and minor automation

